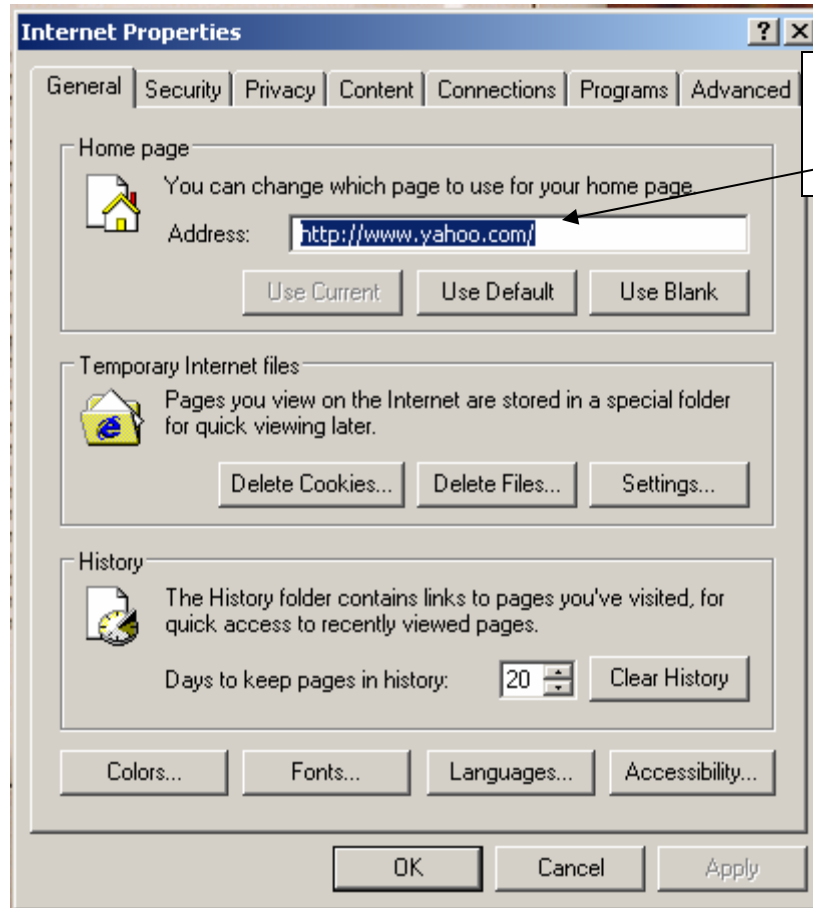


Internet Explorer Properties

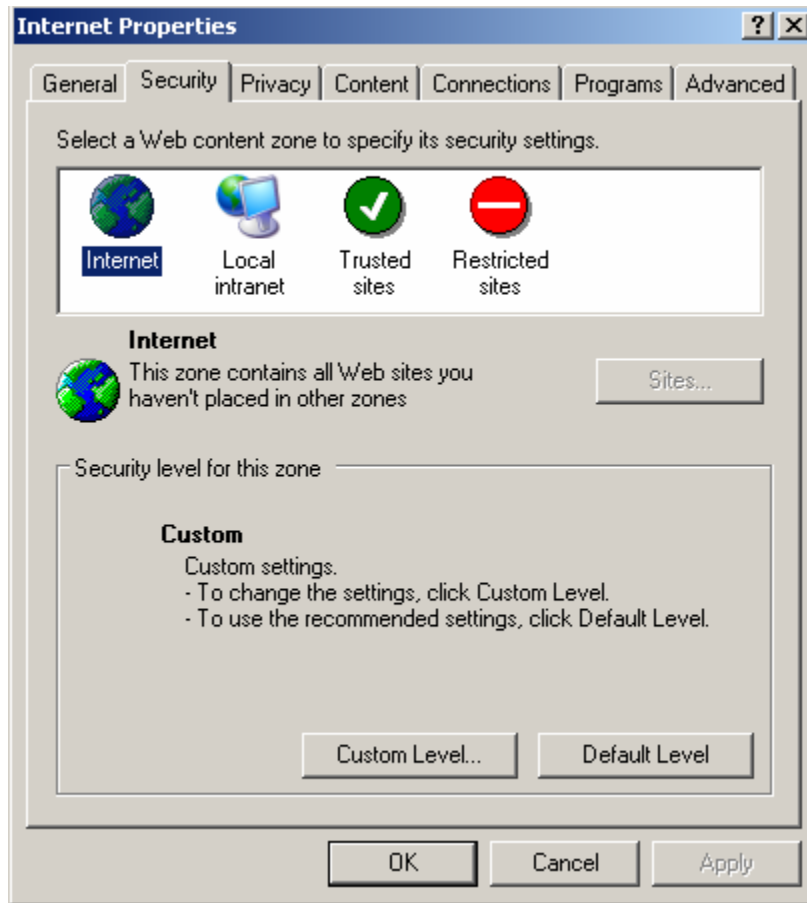
(if you are using another web browser than you settings may vary slightly)

General Tab:

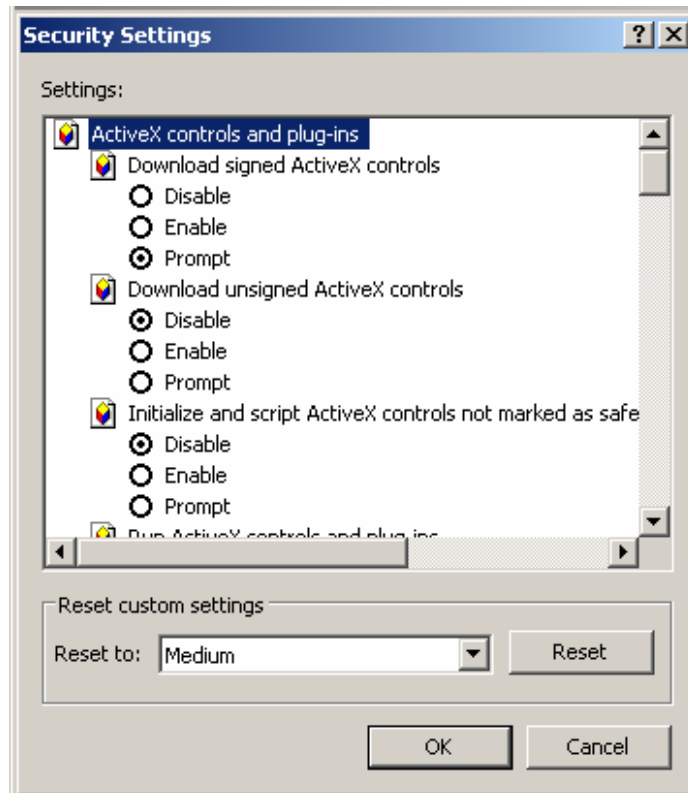


What ever you want your home page to be, enter it here.

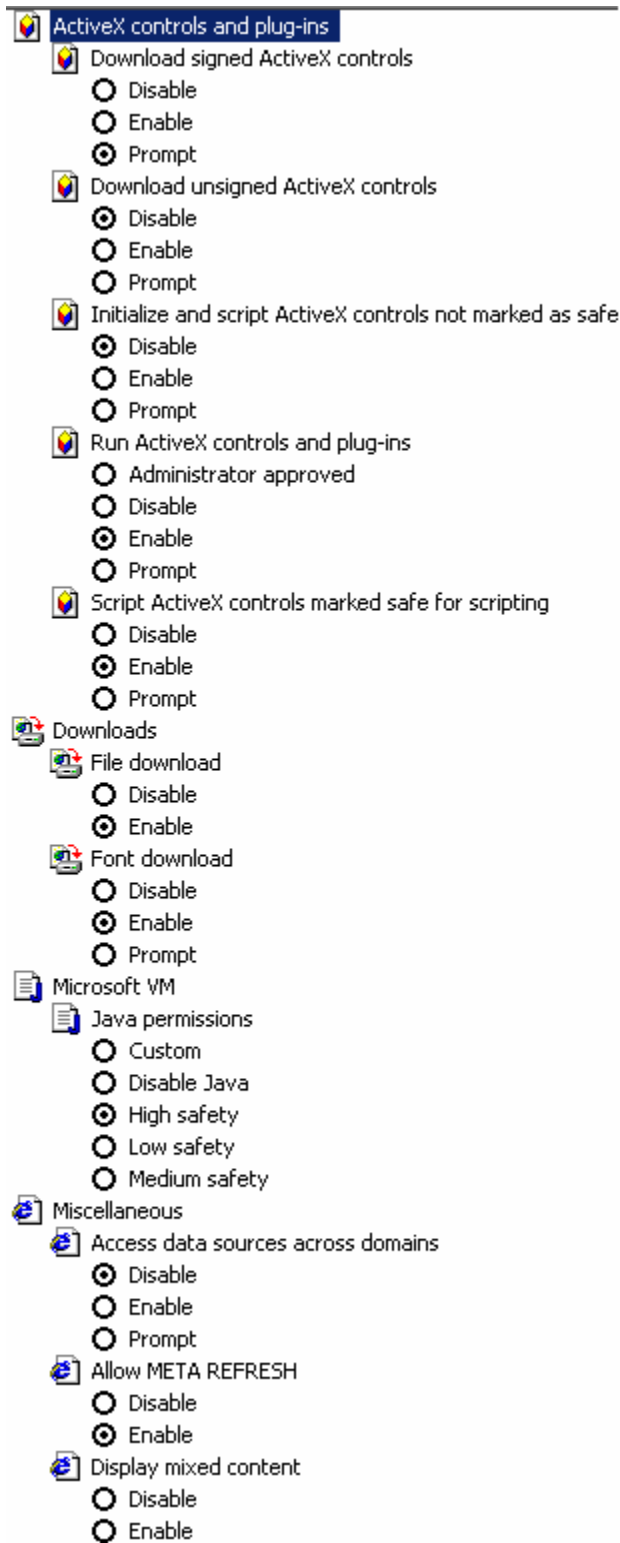
Security Tab:

















Click on the Custom Level Button
On the Security Tab

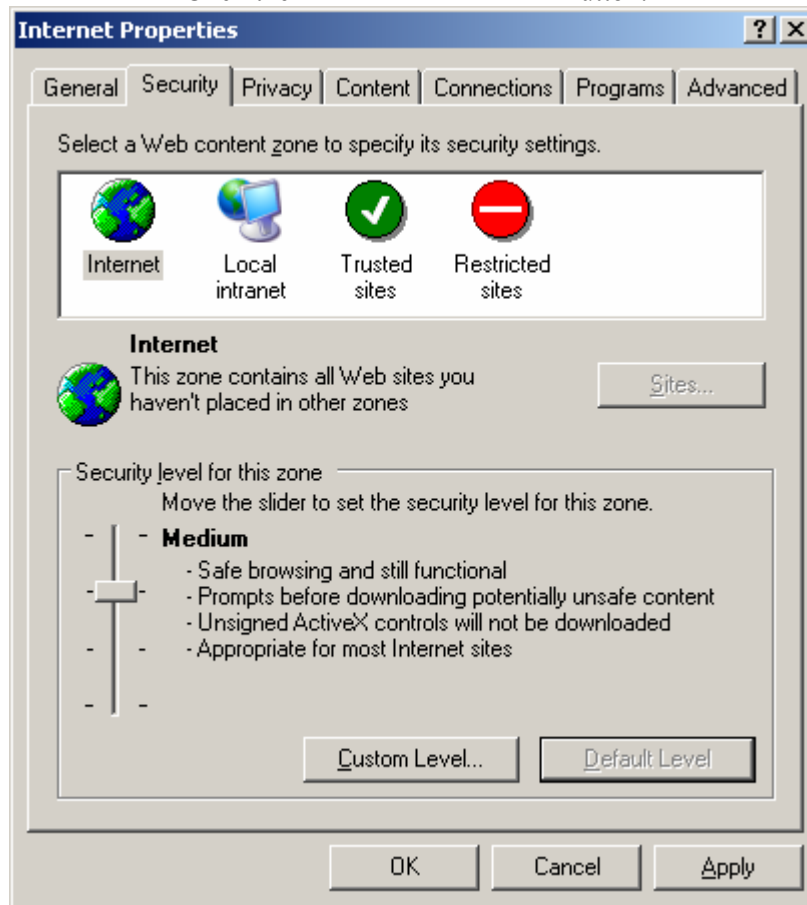


All of your configurations should be similar to the following...

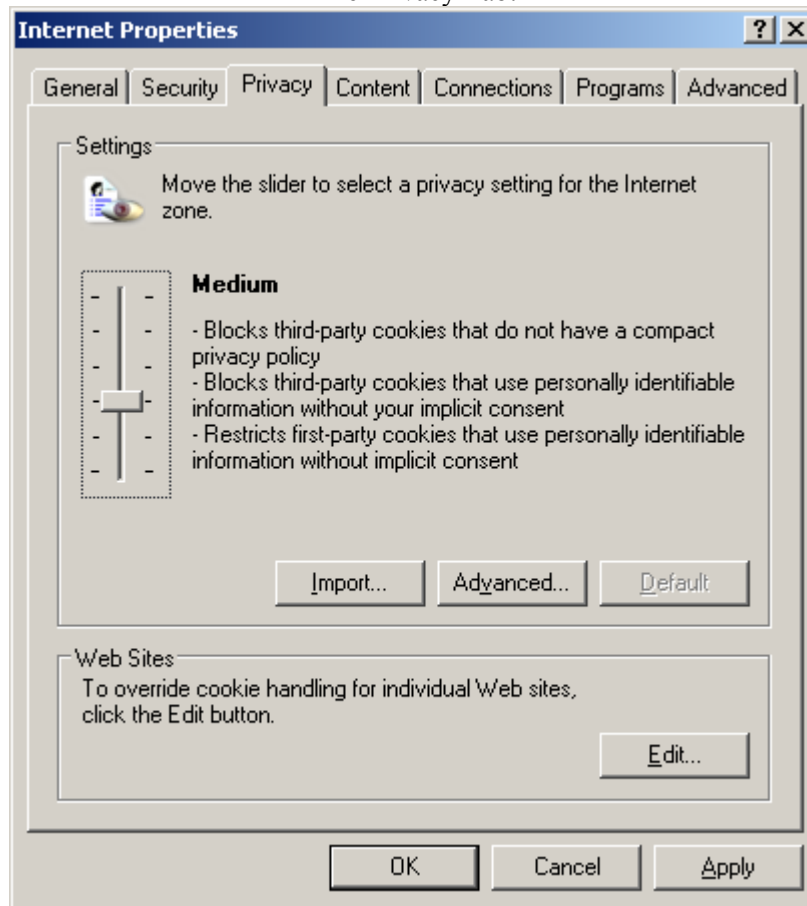


- Prompt
-  Don't prompt for client certificate selection when no certificates or only one certificate exists
 - Disable
 - Enable
-  Drag and drop or copy and paste files
 - Disable
 - Enable
 - Prompt
-  Installation of desktop items
 - Disable
 - Enable
 - Prompt
-  Launching programs and files in an IFRAME
 - Disable
 - Enable
 - Prompt
-  Navigate sub-frames across different domains
 - Disable
 - Enable
 - Prompt
-  Software channel permissions
 - High safety
 - Low safety
 - Medium safety
-  Submit nonencrypted form data
 - Disable
 - Enable
 - Prompt
-  Userdata persistence
 - Disable
 - Enable
-  Scripting
 -  Active scripting
 - Disable
 - Enable
 - Prompt
 -  Allow paste operations via script
 - Disable
 - Enable
 - Prompt
 -  Scripting of Java applets
 - Disable
 - Enable
 - Prompt
-  User Authentication
 -  Logon
 - Anonymous logon
 - Automatic logon only in Intranet zone
 - Automatic logon with current username and password
 - Prompt for user name and password

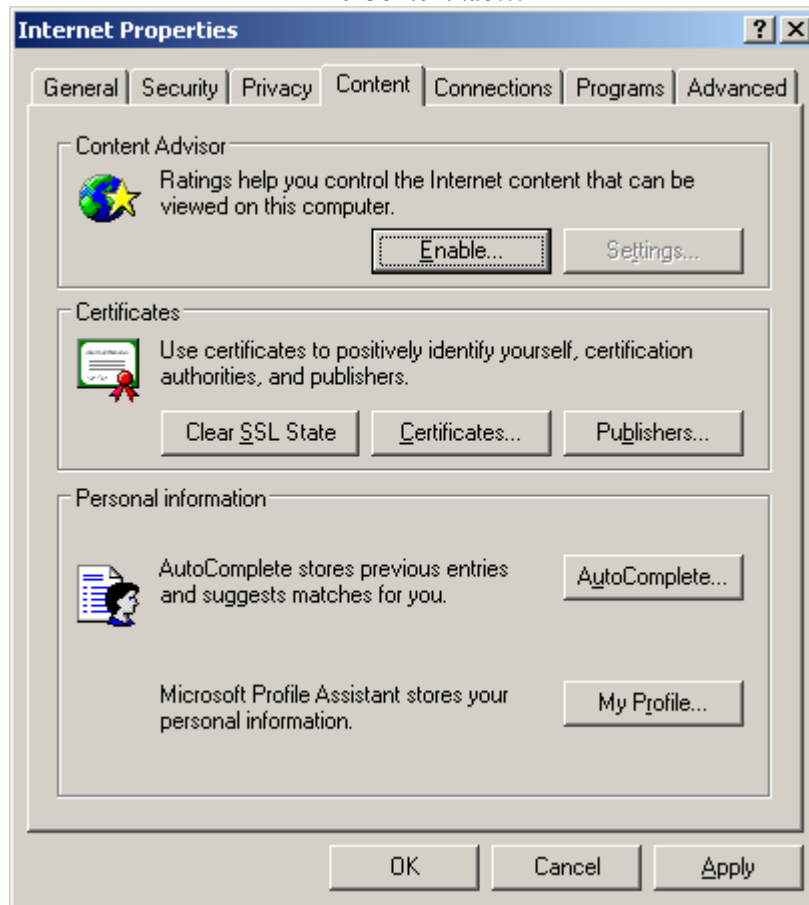
Click the Default Level Button:



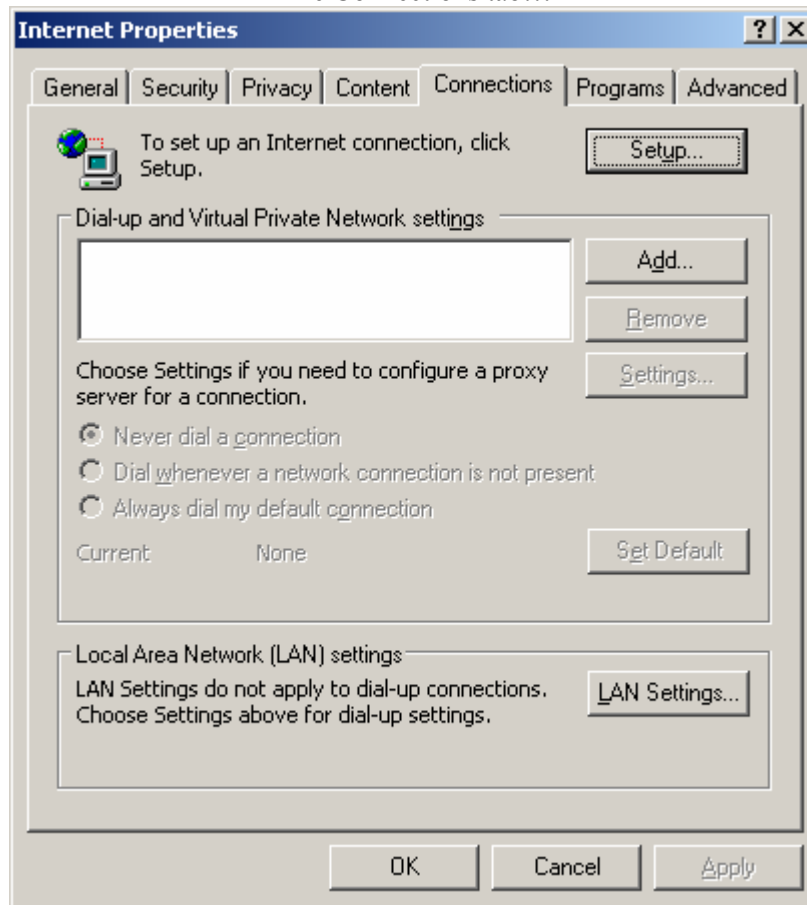
The Privacy Tab:



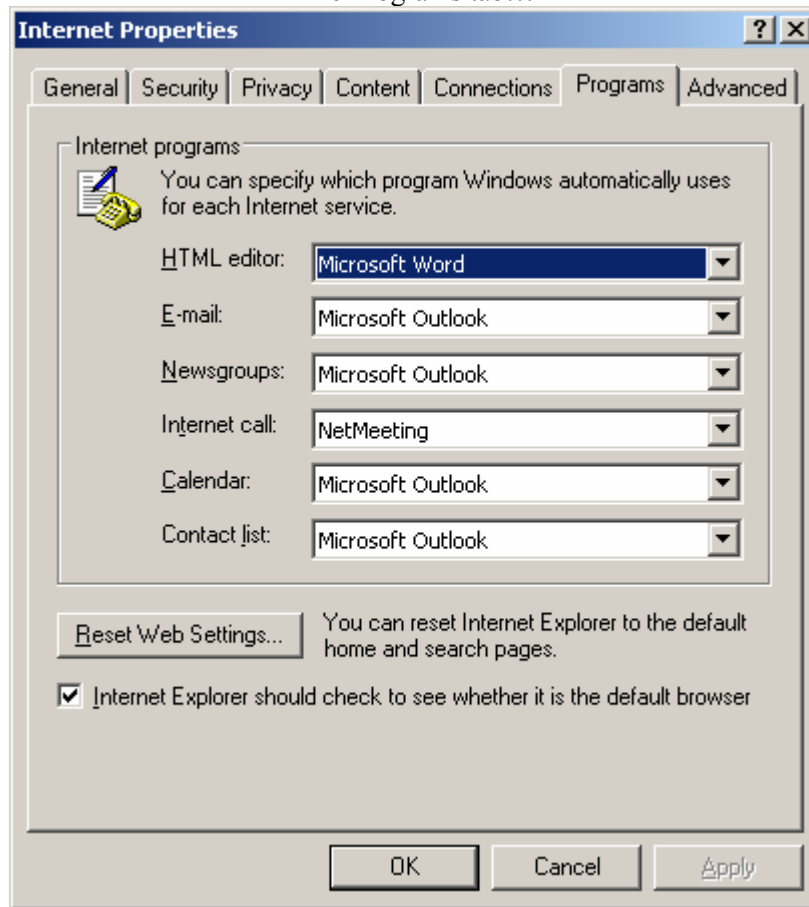
The Content tab...



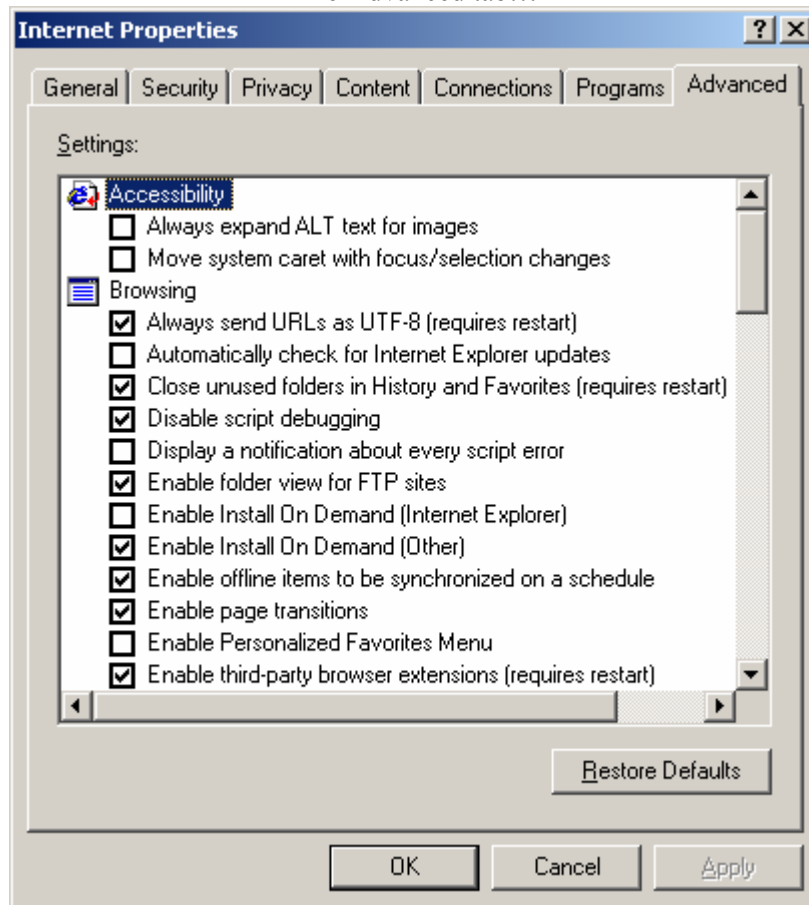
The Connections tab...










The Programs tab...



The Advanced tab...



The rest of the settings should be similar to the following...

- Enable visual styles on buttons and controls in web pages
- Force offscreen compositing even under Terminal Server (requires restart)
- Notify when downloads complete
- Reuse windows for launching shortcuts
- Show friendly HTTP error messages
- Show friendly URLs
- Show Go button in Address bar
- Underline links
 - Always
 - Hover
 - Never
- Use inline AutoComplete
- Use Passive FTP (for firewall and DSL modem compatibility)
- Use smooth scrolling
-  HTTP 1.1 settings
 - Use HTTP 1.1
 - Use HTTP 1.1 through proxy connections
-  Microsoft VM
 - Java console enabled (requires restart)
 - Java logging enabled
 - JIT compiler for virtual machine enabled (requires restart)
-  Multimedia
 - Don't display online media content in the media bar
 - Enable Automatic Image Resizing
 - Enable Image Toolbar (requires restart)
 - Play animations in web pages
 - Play sounds in web pages
-  Printing
 - Print background colors and images
-  Search from the Address bar
 -  When searching
 - Display results, and go to the most likely site
 - Do not search from the Address bar
 - Just display the results in the main window
 - Just go to the most likely site
-  Security
 - Check for publisher's certificate revocation
 - Check for server certificate revocation (requires restart)
 - Check for signatures on downloaded programs

 - Do not save encrypted pages to disk
 - Empty Temporary Internet Files folder when browser is closed
 - Enable Integrated Windows Authentication (requires restart)
 - Enable Profile Assistant
 - Use SSL 2.0
 - Use SSL 3.0
 - Use TLS 1.0
 - Warn about invalid site certificates
 - Warn if changing between secure and not secure mode
 - Warn if forms submittal is being redirected